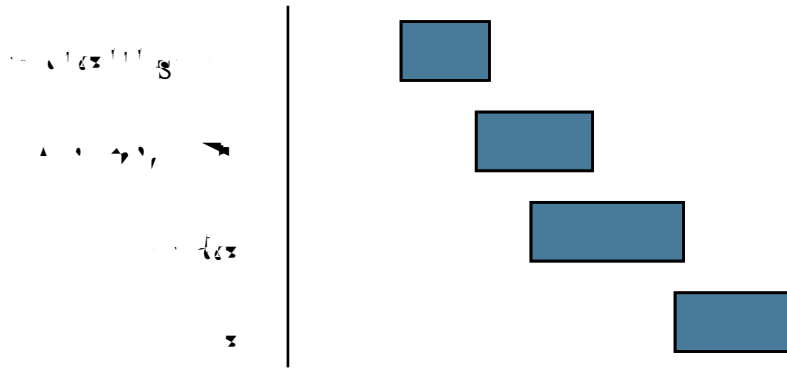


**It E o t:**  
**S S r A t o r o D g t s o 2003 & 2004**



**Salaries in Thousands of Dollars**

... .. % .. ..  
... .. m

**Hg r g r t s**

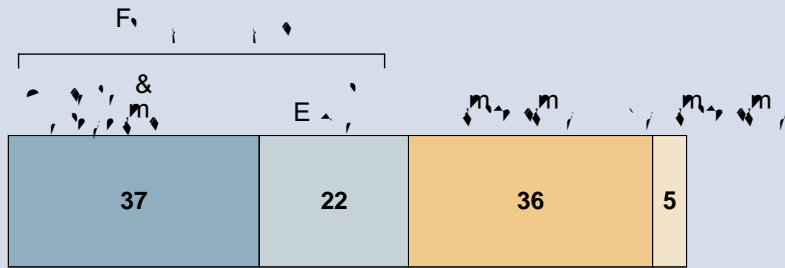
... ..  
... ..

... ..  
... ..  
... ..  
... .. (Fig ( 16) ... ..  
... ..  
... ..  
... ..





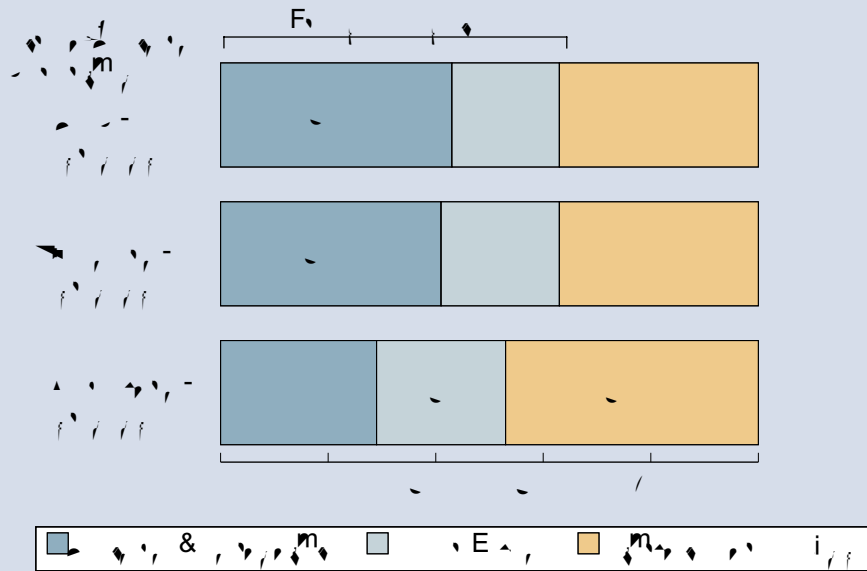
**Fig ( 3. )** It o(t o d so r s s. r o rts, ss so 2003 & 2004.



AIP Statistical Research Center, Initial Employment Report.

... (Fig ( 5) ) ...

**Fig ( 4. )** It o(t o d s. t o t r t t r , s s o's ss so 2003 & 2004.



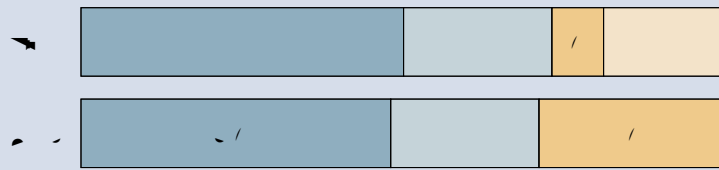
AIP Statistical Research Center, Initial Employment Report.





Fig. 7. Initial Employment Report (IER) for Physics or Astronomy and Other Fields, 2003 & 2004.

Physics or Astronomy



Other Fields



AIP Statistical Research Center, Initial Employment Report.

Initial Employment Report (IER) for Physics or Astronomy and Other Fields, 2003 & 2004. The chart shows the distribution of initial employment reports for these fields. For Physics or Astronomy, the 2003 report shows a higher percentage of reports in the dark blue and light blue categories compared to 2004. For Other Fields, the 2004 report shows a significant increase in the orange category compared to 2003.

(Fig. 8)

Initial Employment Report (IER) for Physics or Astronomy and Other Fields, 2003 & 2004. The chart shows the distribution of initial employment reports for these fields. For Physics or Astronomy, the 2003 report shows a higher percentage of reports in the dark blue and light blue categories compared to 2004. For Other Fields, the 2004 report shows a significant increase in the orange category compared to 2003.

Initial Employment Report (IER) for Physics or Astronomy and Other Fields, 2003 & 2004. The chart shows the distribution of initial employment reports for these fields. For Physics or Astronomy, the 2003 report shows a higher percentage of reports in the dark blue and light blue categories compared to 2004. For Other Fields, the 2004 report shows a significant increase in the orange category compared to 2003.

Initial Employment Report (IER) for Physics or Astronomy and Other Fields, 2003 & 2004. The chart shows the distribution of initial employment reports for these fields. For Physics or Astronomy, the 2003 report shows a higher percentage of reports in the dark blue and light blue categories compared to 2004. For Other Fields, the 2004 report shows a significant increase in the orange category compared to 2003.





0 1 2 3 4 5 6 7 8 9 10 11 12 13 14 15 16 17 18 19 20 21 22 23 24 25 26 27 28 29 30 31 32 33 34 35 36 37 38 39 40 41 42 43 44 45 46 47 48 49 50 51 52 53 54 55 56 57 58 59 60 61 62 63 64 65 66 67 68 69 70 71 72 73 74 75 76 77 78 79 80 81 82 83 84 85 86 87 88 89 90 91 92 93 94 95 96 97 98 99

३३ **S S B** ३३ **o 's: Long** **Go s**

0 1 2 3 4 5 6 7 8 9 10 11 12 13 14 15 16 17 18 19 20 21 22 23 24 25 26 27 28 29 30 31 32 33 34 35 36 37 38 39 40 41 42 43 44 45 46 47 48 49 50 51 52 53 54 55 56 57 58 59 60 61 62 63 64 65 66 67 68 69 70 71 72 73 74 75 76 77 78 79 80 81 82 83 84 85 86 87 88 89 90 91 92 93 94 95 96 97 98 99



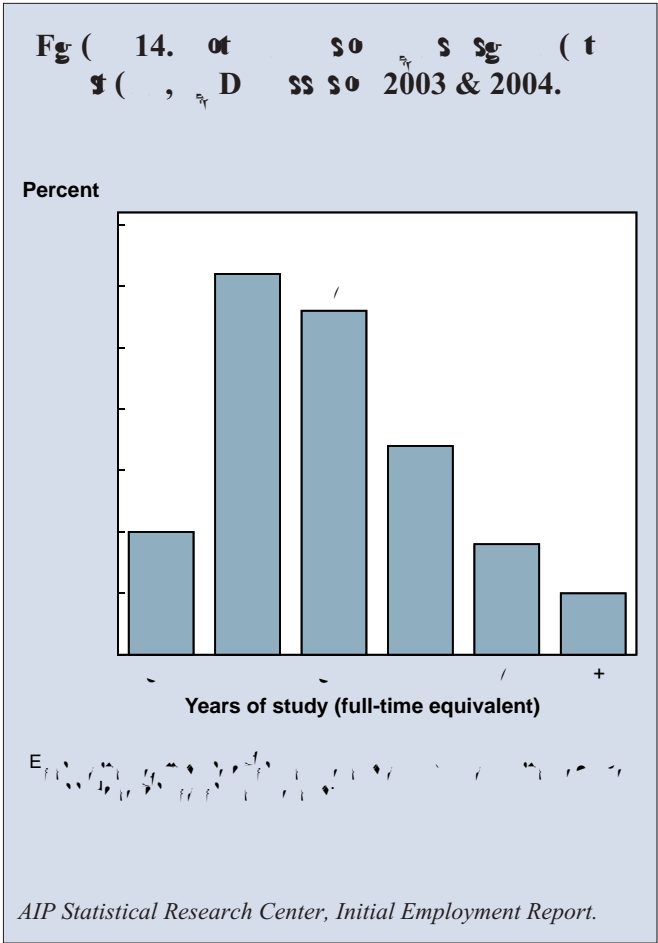


The following table shows the distribution of students by years of study (full-time equivalent) for the years 2003 and 2004. The data is presented in percentages.

Years of study (full-time equivalent)	2003 (%)	2004 (%)
1	15	18
2	45	42
3	25	28
4	10	8
5	5	6

The following table shows the distribution of students by years of study (full-time equivalent) for the years 2003 and 2004. The data is presented in percentages.

Years of study (full-time equivalent)	2003 (%)	2004 (%)
1	15	18
2	45	42
3	25	28
4	10	8
5	5	6















6. Long-term growth trends in D's, ss so 2003 & 2004.	
1. ...	...
2. ...	...
3. ...	...
4. ...	...
5. ...	...

AIP Statistical Research Center, Initial Employment Report.

... growth trends ...

**As of 2004 D's**

... as of 2004 ...

... growth trends ...

... growth trends ...

... growth trends ... (Fig 19)

7. Long-term growth trends in D's, ss so 2003 & 2004.				
Int E's	H's	C's		
		...	...	...
1. ...	...	...	...	...
2. ...	...	...	...	...
3. ...	...	...	...	...
4. ...	...	...	...	...

AIP Statistical Research Center, Initial Employment Report.



Figure 20. Initial Employment Report (IER) for 2003 & 2004.

The IER for 2003 and 2004 shows a significant increase in initial employment. In 2003, the initial employment rate was 1.2%, while in 2004, it rose to 1.8%. This increase is primarily driven by the growth in the number of new hires, which grew from 1.2 million in 2003 to 1.8 million in 2004. The total number of employees also increased, from 100 million in 2003 to 102 million in 2004. The IER is calculated as the number of new hires divided by the total number of employees. The increase in the IER is a positive sign for the economy, indicating that more people are finding jobs for the first time.

The IER for 2003 and 2004 shows a significant increase in initial employment. In 2003, the initial employment rate was 1.2%, while in 2004, it rose to 1.8%. This increase is primarily driven by the growth in the number of new hires, which grew from 1.2 million in 2003 to 1.8 million in 2004. The total number of employees also increased, from 100 million in 2003 to 102 million in 2004. The IER is calculated as the number of new hires divided by the total number of employees. The increase in the IER is a positive sign for the economy, indicating that more people are finding jobs for the first time.

Fig ( 20. Initial Employment Report (IER) for 2003 & 2004.



AIP Statistical Research Center, Initial Employment Report.