

14-73  
App. 9/23/14  
Senate Info 10/7/14

**Undergraduate Distance Education Review Form**  
(Required for all courses taught by distance education for more than one-third of teaching contact hours.)

**Existing and Special Topics Course**

Course: CRIM 420 Media Portrayal of Crime

Instructor(s) of Record: Erika D Frenzel

**Step Two: Departmental/Dean Approval**

Recommendation:  Positive (The objectives of this course can be met via distance education)

Negative

Kate Hawrohan  
Signature of Department Designee

9-22-14  
Date

Endorsed:

[Signature]  
Signature of College Dean

9/22/14  
Date

Forward form and supporting materials to Liberal Studies Office for consideration by the University-wide Undergraduate Curriculum Committee. Dual-level courses also require review by the University-wide Graduate Committee for graduate-level section.

**Step Three: University-wide Undergraduate Curriculum Committee Approval**

Recommendation:  Positive (The objectives of this course can be met via distance education)

Negative

Gail Seehurst

9/23/14

A1. I have taught distance education at both the undergraduate and graduate level. I have taught distance education during the standard academic year, summer sessions, and winter sessions. I received my Ph.D. from University of Nebraska at Omaha in 2005. I am faculty member in the Department of Criminology and have taught Criminology courses here at IUP for 10 years. I am approved to teach at the graduate level and have taught undergraduate, graduate, and doctoral courses. Some of my research is on media and crime and relates to the course.

A2. Course objectives:

- a. Compare criminal justice realities to media portrayal
  - a. Will be met through forum discussions
  - b. Will be met through creation of media project
- b. Compare various forms of media and the similarities or differences in the portrayal of offenders, victims, and criminal justice actors
  - a. Will be met through forum discussions
- c. Critically analyze the influence of media on public perceptions of offenders, victims, criminal justice actors, and the criminal justice system
  - a. Will be met through forum discussions
  - b. Will be met through a paper assignment

Media Portrayal of Crime  
CRIM 420  
Winter Session

Professor: Dr. Erika Davis Frenzel

Office Location: Wilson 205

Office Hours: Virtual office hours Mondays 6:00-8:00 pm (EST) and Thursdays 12:30-1:30 pm (EST)

Call 800-774-3888 (toll-free) or 407-924-3000 (local) for more information. Visit [www.cpa.edu](http://www.cpa.edu) for more information.



**Paper Assignments (100 pts):** There will be two paper assignments. Each paper should be 3-5 pages in

## Tentative Schedule

The schedule is contingent on the pace of the class. I reserve the right to modify the schedule and any other part of the syllabus to fit the needs of the class.

Media Portrayal of Crime  
CRIM 420-001  
Monday, Wednesday, Friday 1:25-2:15  
Wilson 101

Professor: Dr. Erika Davis Frenzel

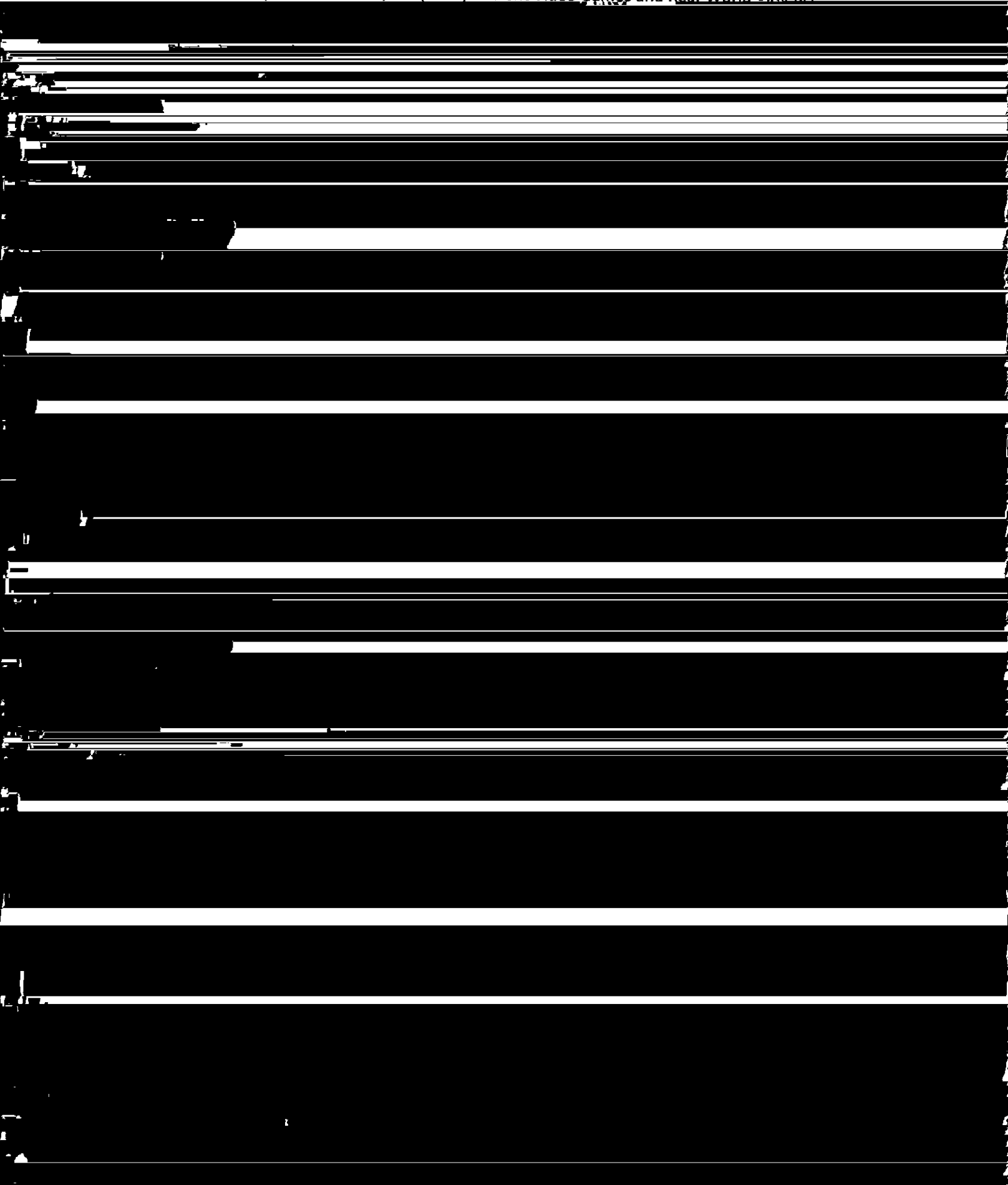
Office Location: Wilson 205

Office Hours: Mondays 10:00-11:00, 2:30-3:30, Wednesdays 10:00-11:00, 12:15-1:15, Fridays 10:00-11:00 or by appointment

Office Phone: 724-357-5933

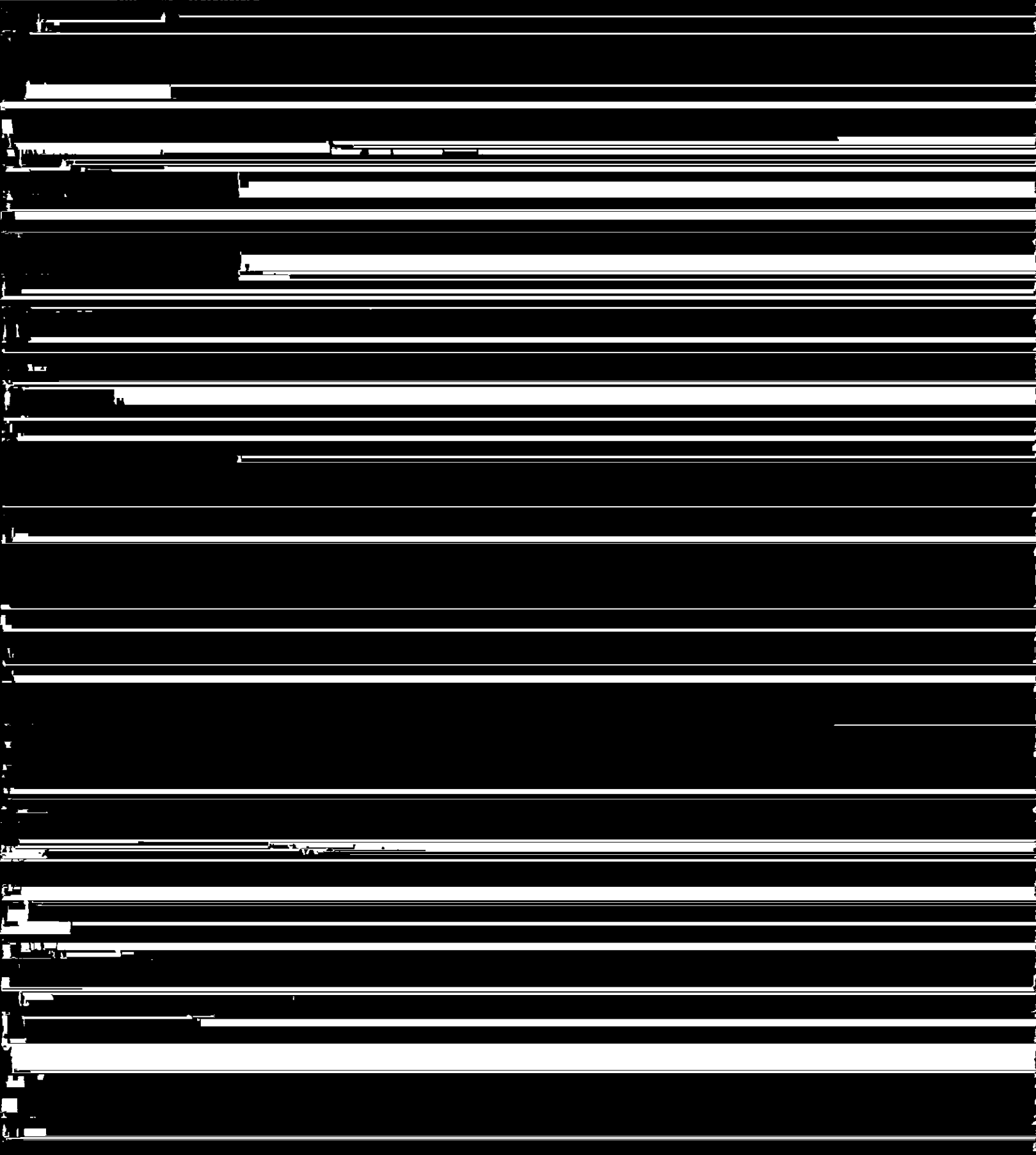
E-mail: e.frenzel@iup.edu

**IUP Catalog Description:** Provides an examination of the portrayal of crime in the media (television, film, newspapers, music, video games, electronic/internet). This includes but is not limited to: victims, offenders, criminal justice actors, and the criminal justice system. Of importance is how the media select what is newsworthy and how it describes and/or alters criminal justice issues. Attention will be paid to the media's influence on perceptions of crime, the ethics behind the media's portrayal of crime.





count against you, but do require prior notification (by e-mail, phone message, in person) to the missed class and may require written proof. Being tardy to class disrupts the classroom environment and is disrespectful to your classmates.



assumption(s). A grading rubric for the presentation will be passed out in class. Presentations should be creative in nature. Presentations should last approximately 10 minutes.

Exams (200 pts): There will be a midterm and final

**Summary/Discussion Question:** Explain the 5 propaganda filters.

September 5 **Reading:** Chapter 2 Pages 39-54

**Summary/Discussion Question:** Contrast the objective model of media coverage with the subjective model of media coverage.

September 8 **Reading:** Chapter 2 pages 54-68

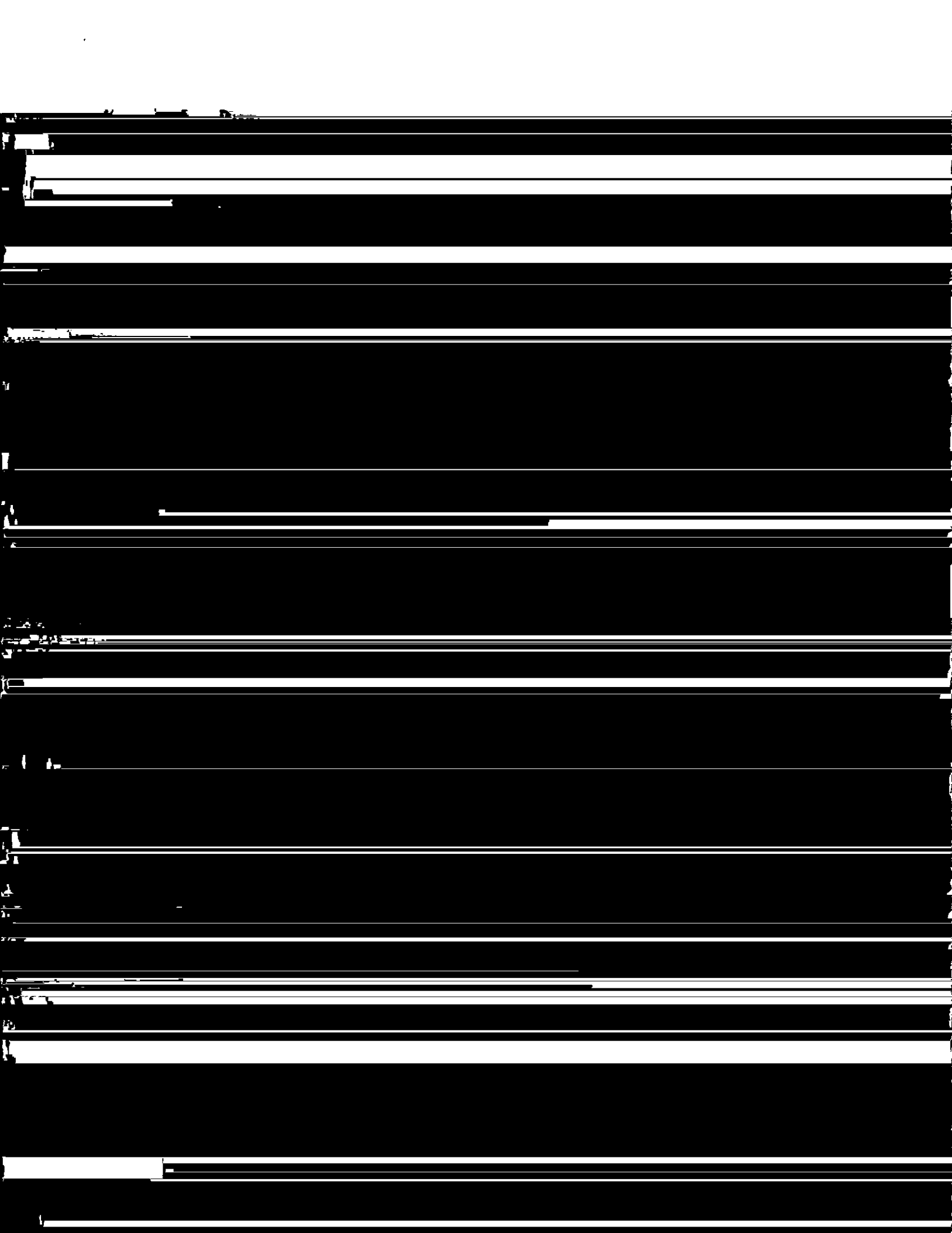
September 29 **Reading:** Surette & Maze  
**Summary/Discussion Question:** TBA

October 1 **Reading:** Markey, Markey & French  
**Summary/Discussion Question:** TBA

October 3 **Interaction with media**

October 6 **Midterm Exam**

October 8 **Reading:** Chapter 5 pages 147-162  
**Summary/Discussion Question:** TBA





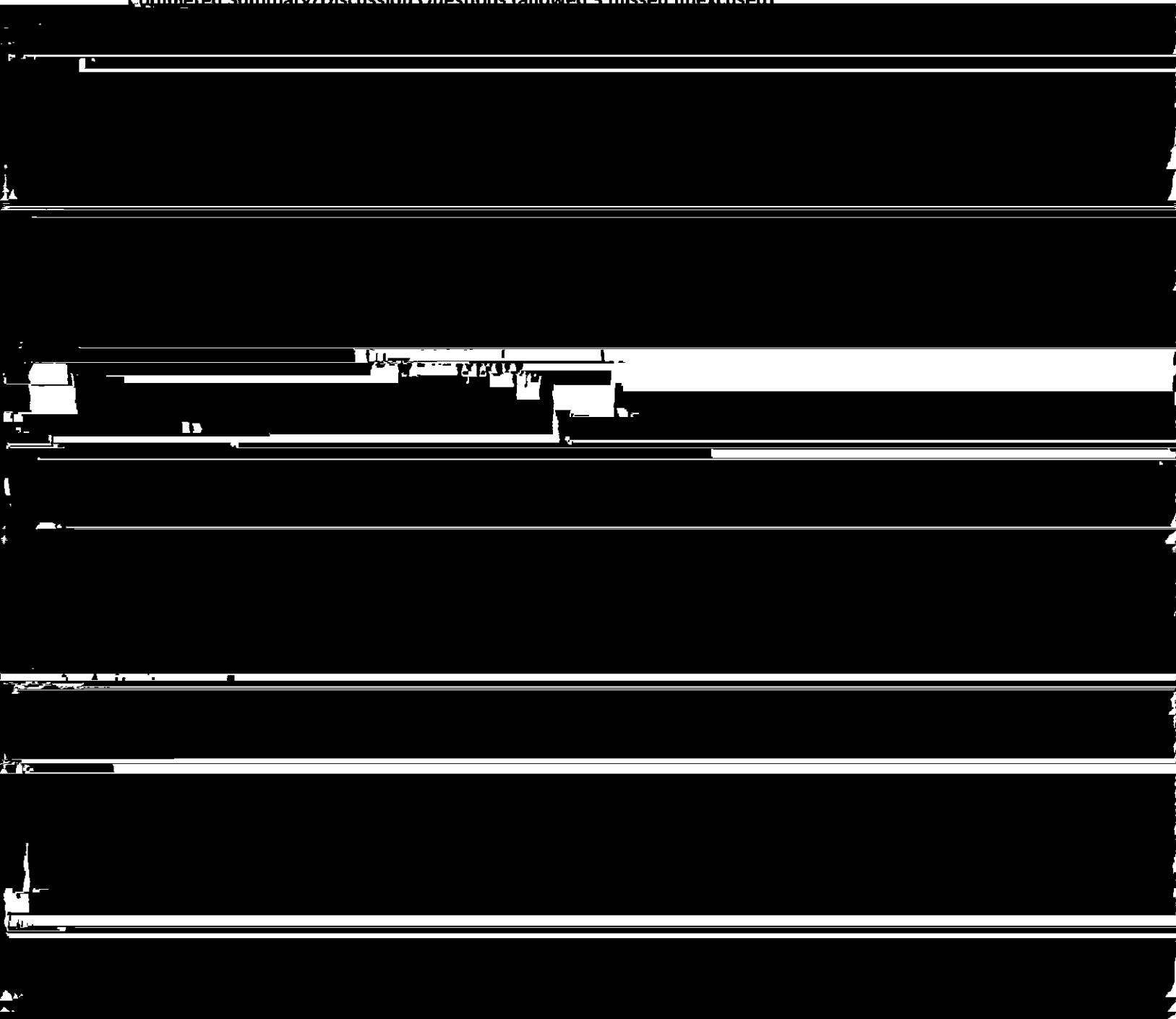
Participation Rubric

Student Name \_\_\_\_\_

Identify whether you were an Observer, Contributor, or Scholar (choose only one) and provide a brief justification for the number of points you have assigned yourself.

**OBSERVER: (45-59 pts)**

**Completed Summary/Discussion Questions (allowed 3 missed unexcused)**



**SCHOLAR: (68-75pts)**

**Completed Summary/Discussion Questions (allowed 3 missed unexcused)**

**Attends class regularly (allowed 3 missed unexcused)**

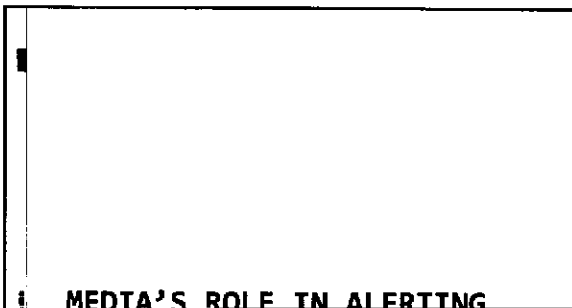
**Conveyed respect and attentive behavior**

**Added insights or examples**

Provided scholarly articles or media references that add to the discussion (need to provide supporting evidence of your contributions)

**Asked questions to clarify**





**MEDIA'S ROLE IN ALERTING**

### Perception Is Reality

- How does Media shape one's reality?
- "People use knowledge they obtain from the media to construct a picture of the world, an image of reality on which they base their actions" (Robinson, 2011, pg 41).

### PA Sex Offender Registration and Notification

|                                     |        |
|-------------------------------------|--------|
| ▪ 2014                              |        |
| ▪ Sexually violent delinquent child | 41     |
| ▪ Sexually violent predator         | 1,094  |
| ▪ Tier 1                            | 2,391  |
| ▪ Tier 2                            | 1,855  |
| ▪ Tier 3                            | 11,144 |

- Offenses that trigger registration in PA
  - See <http://www.pameganslaw.state.pa.us/CrimeCode.aspx?dt=>
- Tier Classification in PA
  - See <http://www.pameganslaw.state.pa.us/Registration.aspx?dt=>
- Notification in PA

dit ▾ 

dit ▾

ity or resource



dit ▾ 


dit ▾

dit ▾

dit ▾

ity or resource

2 and Fox article

Alerting and Alarming the Public 

What social problems? You may use the PowerPoints or the reading to help answer the question.

Alerting 

History of Crime 

Criminal Law 